

L-7096 S1 SRC

Non-Slip & Lightweight Work Shoes

Professional Work Shoes is made with White Micro Fiber Leather and PU injection Outsole. It is approved by Europe SGS Lab with CE SB category.



SLIP RESISTANT SOLE DESIGN



Upper : Water Resistant Micro Fiber Leather

Lining : Breathable Sandwich Air Mesh

Insole : Comfortable EVA Coated Mesh

Outsole : PU Injection (Non-Slip)

Toecap : Steel Toecap

Size : EU 37-47#, UK 3-13#, US4-14#

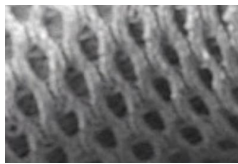
CE EN ISO 20345:2011 SB SRC

Application : Kitchen, Healthcare, Food Industry, Cleaning Industry, Laboratory Research, Food Storage etc



Steel Toecap Protection • AN1-EN12568

Stainless steel toe cap can reach 200 joules from falling or rolling objects. It is stronger than iron toe cap.



Breathable Sandwich Air Mesh • CE EN ISO 20344:2011

Honeycomb design sandwich air mesh lining is breathable & abrasion resistant. It can keep user's feet dry all days. The abrasion resistant can reach more than 51200 cycles at dry test. Meanwhile, the mesh tear strength can reach more than 15 newtons.



Water Resistant Micro Fiber Leather • CE EN ISO 20345:2011

High quality micro fiber leather with thickness 1.6-1.8mm. It is treated with water resistant coating to protect feet from raining workday. Tear strength is required 10% higher than Europe test requirement, to reach longer lifespan.

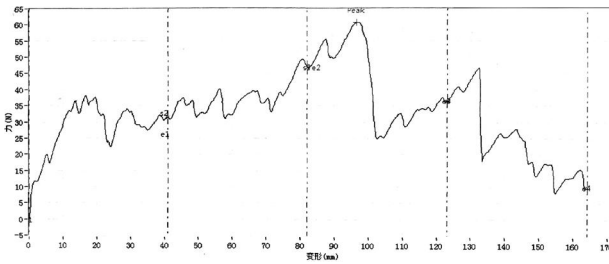


Light Weight PU Injection Outsole • CE EN ISO 20345:2011

The outsole is made of PU material in single density, which is soft and shock absorption, tough and abrasion resistant. The outsole can pass SRC slip-resistant test.

Sole Bonding Strength Test

- EN ISO 20344:2011, 5.2 (Between Upper & Sole)
- Average Test Result 5.8 ± 5 (N/mm)



Upper, Lining & Bonding Strength Test Result

Upper Tear Strength \geq	60.0 Newtons
Upper Tensile Properties \geq	15.0 N/mm ²
Lining Tear Strength \geq	15.0 N/mm
Bonding Strength \geq	4.0 N/mm

✓ Protection With Slip Resistant (SRC)	Result
Test Requirement : SRA (Eurotile 2+Nal S) Forward Heel Slip ≥ 0.28 & Forward Flat Slip: ≥ 0.32 SRB (Steel Floor+Glycerine) Forward Heel Slip ≥ 0.13 & Forward Flat Slip: ≥ 0.18	PASS
Standards : EN ISO20344:2011(5.11) , SRC Means both SRA & SRB requirements are fulfilled.	
✓ Protection With Anti-Static	Result
Test Requirement : Anti-static 100K Ω -1000M Ω , Test Voltage: 100 \pm 2 V DC , Test Period: 1 Minute	PASS
Standards : EN ISO 20344:2011(5.10) Dry Humidity (30 \pm 5) & Wet Humidity (85 \pm 5)	
✓ Protection Resistant to Fuel Oil	Result
Test Requirement : Change in Volume and Change in Hardness (Outsole) is No More Than +12%(*)	PASS
Standards : EN ISO 20344:2011(8.6.1)	
SAFETOE Standard Package Instruction (Average 42# for Reference)	
Shoes Weight : 1.0-1.1 KGS /Pair	Carton Weight : 11-12 KGS /Carton
1 Pair / Color Box , Dimensions : 32 \times 21 \times 12CM	10 Pair / Carton , Dimensions : 62 \times 43 \times 33CM



User Instructions:

- 1.) RECOMMENDED TO USE : Kitchen, Healthcare, Food Industry, Cleaning Industry, Laboratory Research, Food Storage etc.
- 2.) LIMITATION TO USE: It is very important that footwear selected must be suitable for the right workplaces. The protection against risks or hazards which are not mentioned in this document is not warranted.
- 3.) FITTING & SIZE: All footwear are marked with standard size on tongue label. Some are with different size comparison, such as EU size, UK size, US size etc. Please wear footwear in a suitable size.

- 4.) STORAGE: Keep the footwear in its original packaging, under ordinary temperature, non-humidity conditions and in clean, covered and ventilated premises.
- 5.) CLEANING: Clean footwear regularly by high quality cleaning treatments recommended as suitable for the purpose. Don't use caustic or corrosive cleaning agents.